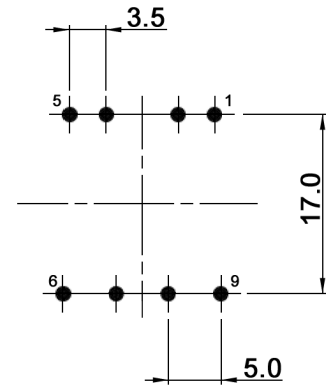
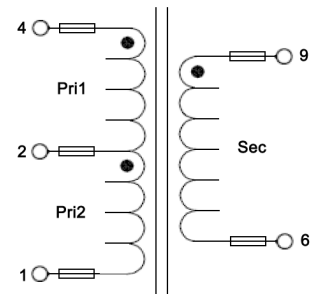


P.C.B. LAYOUT



SCHEMATIC



Compliance: RohS II (2011/65/EU), IEC 61558-2-16 compliant based on design

tolerances	ICS	Product Data-sheet	2 04 72 page 1/2
	drawn: D. Rauschert, 13.04.2018 approved: C. Schmid, 13.04.2018	Transformer	
date: modification, name	Part Number ICST37411000LHK61		

Specifications:

Turns ratio: 88:14 (Pri to Sec)
 Core-shape: EF16
 Topology: Flyback
 Inductance (10 kHz, 0.1 V): Pri (pin 4-1): 370 μ H +/-10%
 Output power: 5 W (12 V / 0.417 A)
 Input voltage range: 180-270 V
 Operating frequency: n.a.
 Dielectric strength: 4.0 kV AC for 1 sec. (Pri to Sec)
 1.0 kV AC for 1 sec. (line to core)
 Stray inductance (100 kHz, 0.1 V): 15.5 μ H max.
 Resistance per winding: Pri: 2.3 Ohm amx.
 Sec: 85.0 mOhm max.
 Primary voltage-time-constant: n.a.
 Operating temperature: -40°C to +125°C
 Material: Bobbin: EF16, THT 5+4 PIN, Phenolic, UL94V-0, E59481, E54705
 Core: Ferrite, EF16, P4/NH2B/TP4 or Equ
 Wire: PU-enamelled copper, Class F, E227046, E201757, E344055
 Wire: Triple insulated wire, E206440, E343241
 Insulation tape: Polyester, E165111, E17385
 Tube: Teflon tube, E338209
 Varnish: E314793, E317427
 Tin: Sn99.3Cu0.7 or Sn99Ag0.3Cu0.7

Compliance: RohS II (2011/65/EU), IEC 61558-2-16 compliant based on design

tolerances	ICS	Product Data-sheet	2 04 72 page 2/2
	drawn: D. Rauschert, 13.04.2018 approved: C. Schmid, 13.04.2018	Transformer	
date: modification, name	Part Number ICST37411000LHK61		